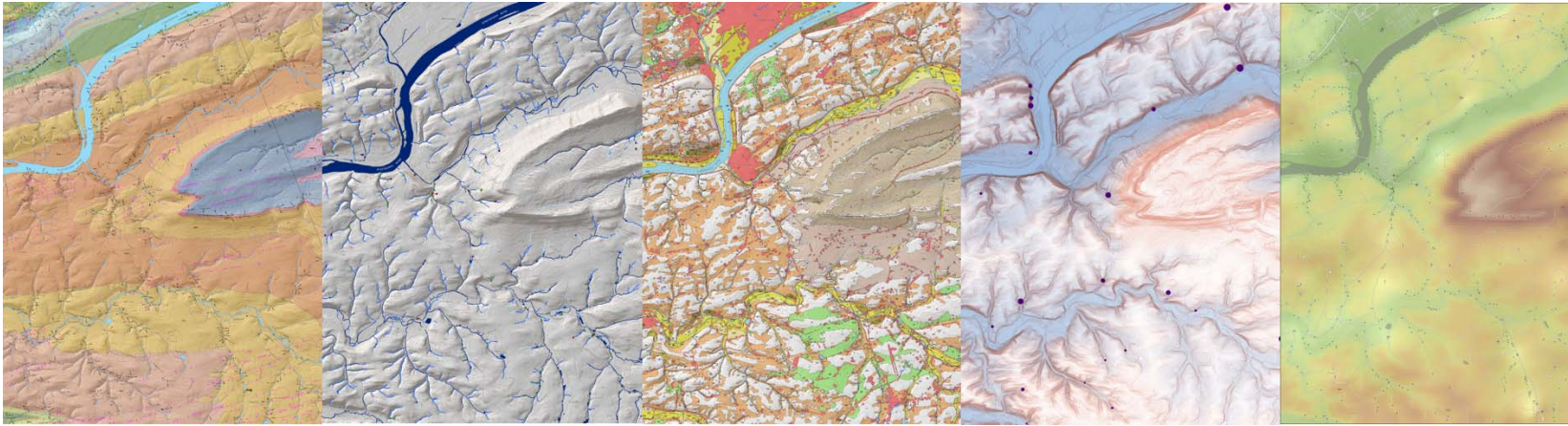


Modern Tools, Field Geology, and New Insights from the Catawissa Quadrangle

Al Guisepppe, PG, Pennsylvania Geological Survey



(Image: A. Guisepppe)

DATE: Wednesday, March 18, 2026

LOCATION: Boal Hall, 113 East Pine St.,
Boalsburg, PA 16827

TIME: 7:00 p.m. Social Hour & Refreshments
7:45 Announcements, Q&A
8:00 Featured Program

Nittany Mineralogical Society monthly meeting

All are welcome to attend

Free admission, free parking, free refreshments

This presentation will highlight how modern GIS tools and field observations work together to reveal new details about rock exposures, stream systems, and geomorphology.

Visit: www.nittanymineral.org